

Network Video Decoder SVP-1000 Full Manual

NETWORK VIDEO DECODER

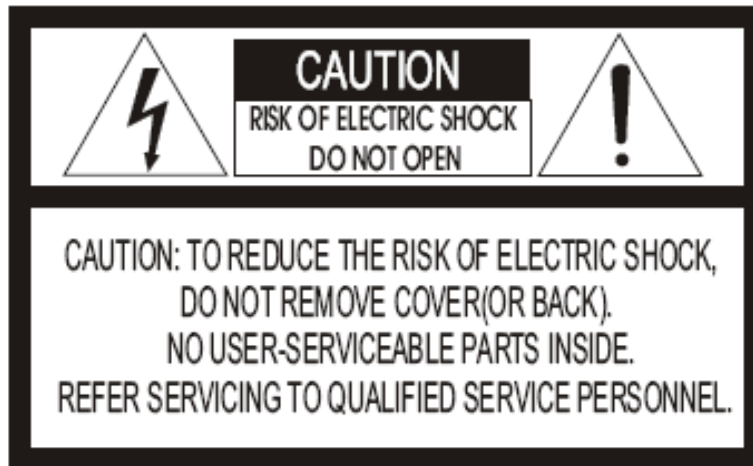
MODEL: SVP-1000



Full Manual (English)

Version 1.0

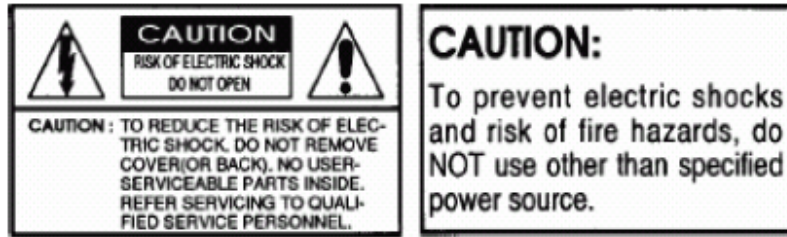
Warning



The lightning flash with arrowhead symbol, within an equilateral triangle, is intended to alert the user to the presence of uninsulated "dangerous voltage" within the product's enclosure that may be of sufficient magnitude to constitute a risk of electric shock to persons.



The exclamation point within an equilateral triangle is intended to alert the user to the presence of important operating and maintenance (servicing) instructions in the literature accompanying the product.



Warning

This equipment has been tested and found to comply with the limits for a Class B Digital Device, pursuant to Part 15 of the FCC Rules. These limits are designed to provide reasonable protection against harmful interference in a residential installation. This equipment can radiate radio frequency energy therefore, if it is not installed and used in accordance with the instruction, it may cause harmful interference to radio communication. However, there is no guarantee that interference will not occur in a particular installation. If this equipment causes harmful interference to radio or television reception, which can be determined by turning the equipment off and on, the user is encouraged to try to correct the interference by one or more of the following measures:

- Reorient or relocate the receiving antenna.
- Increase the separation between the equipment and receiver
- Connect the equipment into an outlet on a circuit different from that to which the receiver is connected.
- Consult the dealer or an experienced radio/TV technician for help.

Caution

Any changes or modifications in construction of this device which are not expressly approved by the party responsible for compliance could void the user's authority to operate the equipment.

Precautions

1. HEED WARNINGS

Adhere to all warnings on the appliance and in the operating instructions.

2. POWER SOURCES

Operate this equipment only from the type of power source indicated on the label. If you are not sure of the type of power being used, consult your dealer or local power company.

3. OVERLOADING

Do not overload wall units and extension cords, as this can result in a risk of fire or electric shock. Frayed power cords, damaged or cracked wire insulation, and broken plugs are dangerous. Periodically examine the cord and replace it if appearance indicates damage or deteriorated insulation.

4. POWER PLUG PROTECTION

Route the power supply cords so they cannot be walked on or pinched by items placed upon or against them.

5. VENTILATION

Do not block the slots or openings of the video server and do not place the equipment on a bed, soft rug, or other similar surface.

6. ATTACHMENTS

Do not use attachments other than those specifically recommended by the equipment manufacturer as they may cause hazards.

7. TO PREVENT SHOCK HAZARD, DO NOT EXPOSE THIS UNIT TO RAIN OR MOISTURE

If you spill liquid on the unit, consult authorized service personnel. Moisture can damage internal parts. Do not use this equipment near sources of water.

8. ACCESSORIES

Use only with a manufacturer recommended card, stand, tripod, bracket or table. The equipment may fall, causing serious injury to a child or adult and serious damage to the appliance.

9. CLEANING THE OUTSIDE SURFACES

Unplug this equipment from the wall outlet before cleaning. Use a damp cloth for cleaning.

10. REQUIRING SERVICE

Unplug the equipment from the wall outlet and request qualified service personnel.

11. SAFETY CHECK

Upon completion of any service or repairs to this equipment, ask the service technician to perform safety checks to determine that the equipment is in safe operating condition.

12. IMPORTANT NOTE TO THE INSTALLER

This installation should be made by a qualified service person and should conform to all local codes. In order to provide this product with protection against risk of unintentional operation by employees, customers, janitors and cleaners working on the premises, and from falling objects, building vibrations and similar causes, it is recommended this product be enclosed in the tamper-resistant lock box. Make sure that the lock box is well ventilated or maintained with an air cooling system.

Table of Contents

1. Introduction of SVP-1000	7
1.1. Product Overview	7
1.2. Features.....	7
1.3. Packing Contents	8
1.4. System Requirements	8
1.5. System Configuration	9
1.6. Physical Description.....	10
1.6.1. Front View	10
2. Basic Setup of SVP-1000	12
2.1. Installation	12
2.2. Network Setting of a PC.....	13
2.2.1. Verifying the network setup status of a user PC	13
2.2.2. Operation of the Web Viewer (URL 192.168.1.10).....	16
3. Configuration of Network Environment	19
3.1. Check up Network Environment and Installation Type	19
3.2. Installation	20
3.2.1. IP Address Setup.....	20
4. Display Mode	23
4.1. Initial Login Screen.....	23
4.1.1. Installation of the Web Viewer	23
4.1.2. Initial Log-in Screen of SVP-1000	24
4.2. SVP-1000 Setting Page	25
5. Admin Setting Mode.....	26
5.1. General Setting.....	26
5.2. Registration Setting	27
5.3. Language Setting.....	28
5.4. Information Setting.....	29
5.5. Network Setting.....	31
APPENDIX A. Video Server Connection Diagram.....	33
APPENDIX B. Troubleshooting.....	35
APPENDIX C. Technical Specification of SVP-1000.....	36

1. Introduction of SVP-1000

1.1. Product Overview

• About the Video DECODER

SVP-1000, the NETWORK VIDEO DECODER is equipped with an embedded system for displaying MPEG-4 video streams arriving from the Internet. Without requiring a PC, NETWORK VIDEO DECODER (SVP-1000) can log in to the remote Video Server / camera located anywhere in the world. In some applications the footprint and expense of a PC is impractical to decode the network video streams. In these cases, the embedded NETWORK VIDEO DECODER (SVP-1000) is a much more efficient and cost effective solution. Video output of SVP-1000 is connected to a TV or a monitor directly.

1.2. Features

- ◆ **Compact Size**
- ◆ **Embedded Linux**
- ◆ **Receive Live& Real time Video streams**
- ◆ **MPEG-4 Decompression**
- ◆ **Low Latency**
- ◆ **Built-in Watch-Dog Timer**
- ◆ **Built-in WEB Decoder**
- ◆ **Support Full Duplex Audio**
- ◆ **No need Personal Computer**
- ◆ **Support Composite Video**
- ◆ **Support all VisualGate Products**

1.3. Packing Contents



NETWORK VIDEO DECODER



Cross LAN Cable



CD-ROM with manual and software



DC Adapter(12V/1A)

* Separate Sale



Power Cable

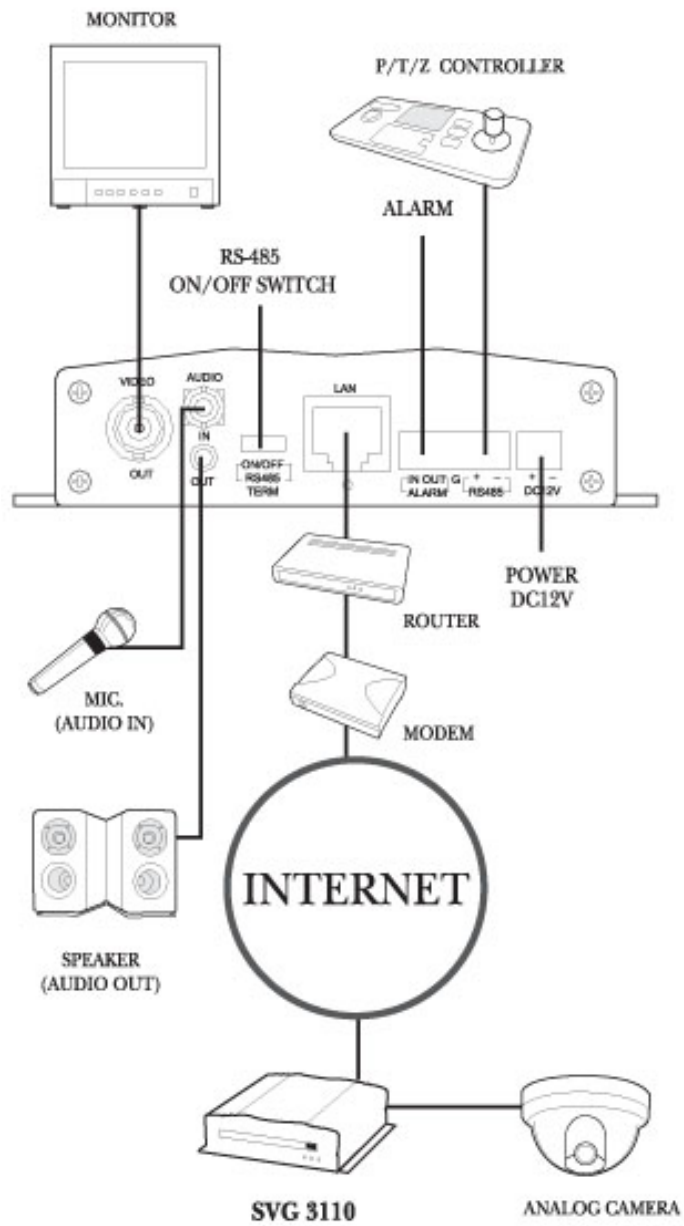
+Terminal Block 2p

Terminal Block 5p

1.4. System Requirements

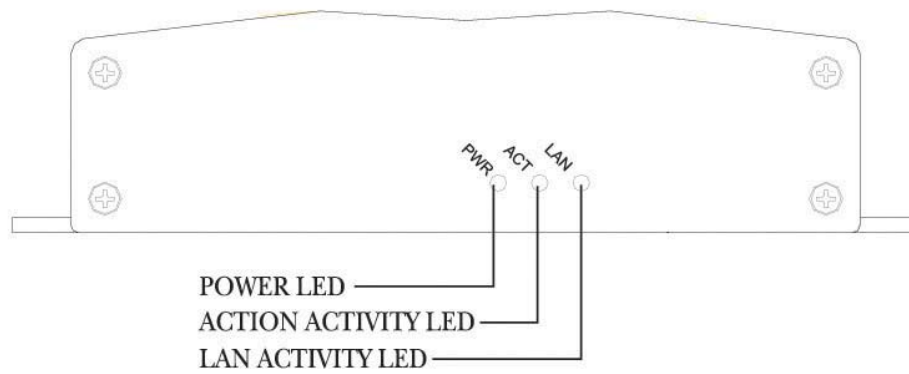
- ◆ Operating System : Microsoft Windows® 2000 or Windows® XP
- ◆ CPU : Intel® Pentium®IV 1.6Ghz or faster
- ◆ RAM : 512MB or higher
- ◆ VGA : AGP, Video RAM 64MB or higher
- ◆ Web Browser : Internet Explorer version 6.0 or higher
- ◆ Direct-X : 8.x or higher
- ◆ INPUT Voltage : DC 12V / 1A
- ◆ Operating Temperature: : 0°C ~ 50°C (32~122°F)
- ◆ Humidity: 20~80% RHG, Non-Condensing

1.5. System Configuration



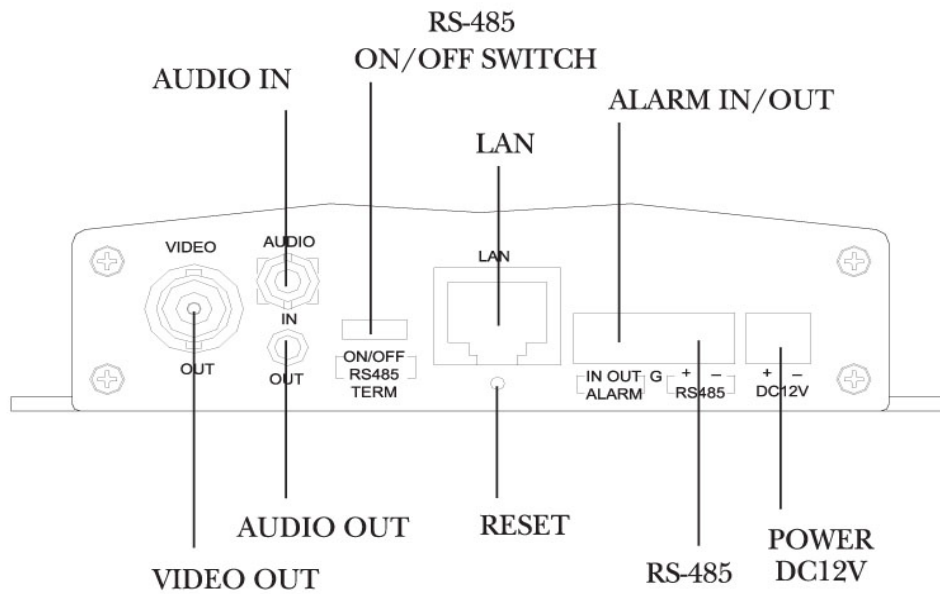
1.6. Physical Description

1.6.1. Front View



- 1) POWER : Power Supply status displays (Red LED on)
- 2) LAN: When data is transmitted and received through the LAN port, the LED blinks.
- 3) OPER: 1Channel Video Server is in operation (Orange LED blinks)

1.6.2. Rear View

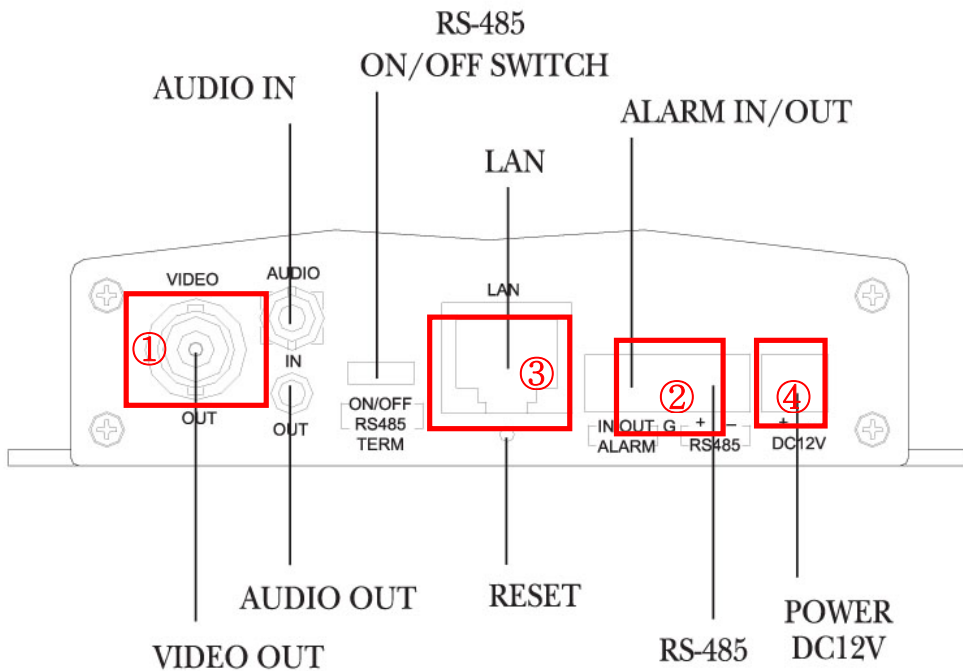


- 1) **VIDEO OUT** : 1Vp-p Composite, 1Channel
- 2) **AUDIO IN** : MONO Audio Input, 1Channel
- 3) **AUDIO OUT** : MONO Audio Output, 1Channel
- 4) **POWER** : DC12V /1A
- 5) **ALARM IN/OUT** : Port for alarm input, output
- 6) **RS-485** : Port for P/T/Z control.
- 7) **LAN** : RJ-45 Ethernet Connector
- 8) **RESET** : Initial state which is factory default
- 9) **RS-485 ON/OFF** : RS-485 On/Off switch
- 10) **ALARM IN/OUT** : TTL LEVEL input/output

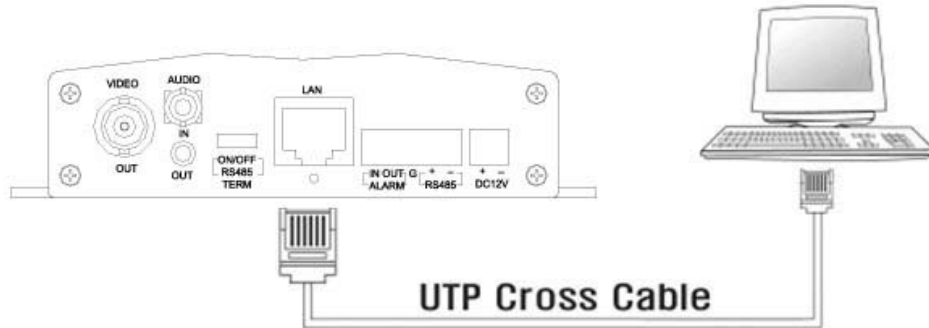
2. Basic Setup of SVP-1000

2.1. Installation

- If you use Network LAN Card in your PC, you can connect the decoder directly to a PC with a Cross LAN Cable provided in the package.
- On the assumption that both the user PC and SVP-1000 are used under static IP, and SVP-1000 is directly connected with the user PC or Local Network, the installation procedure is to be:



- 1) Connect TV Monitor and SVP-1000 with a Video Cable. (①)
- 2) In case of using the controller (ex. Joystick), connect it with RS-485 Port (②).
- 3) Connect SVP-1000 to a PC with a Cross LAN Cable (③)

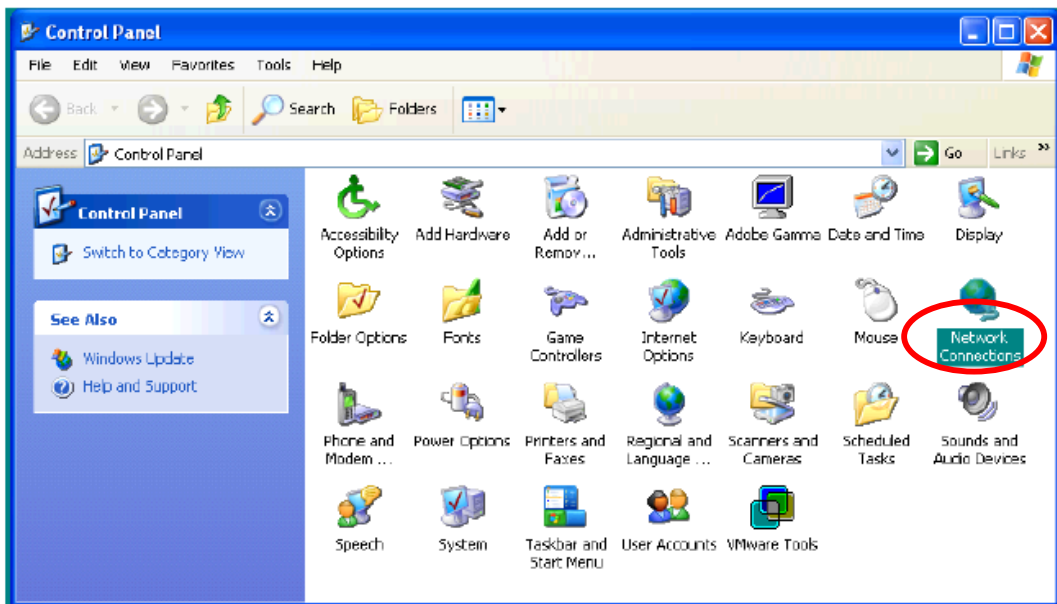


- 4) Supply power on SVP-1000 (**Be sure to use Exclusive Power Adapter**) (④)
- 5) Wait about 2 minutes after power is on the SVP-1000 decoder. The light on LINK LED shows that the system is booted successfully.

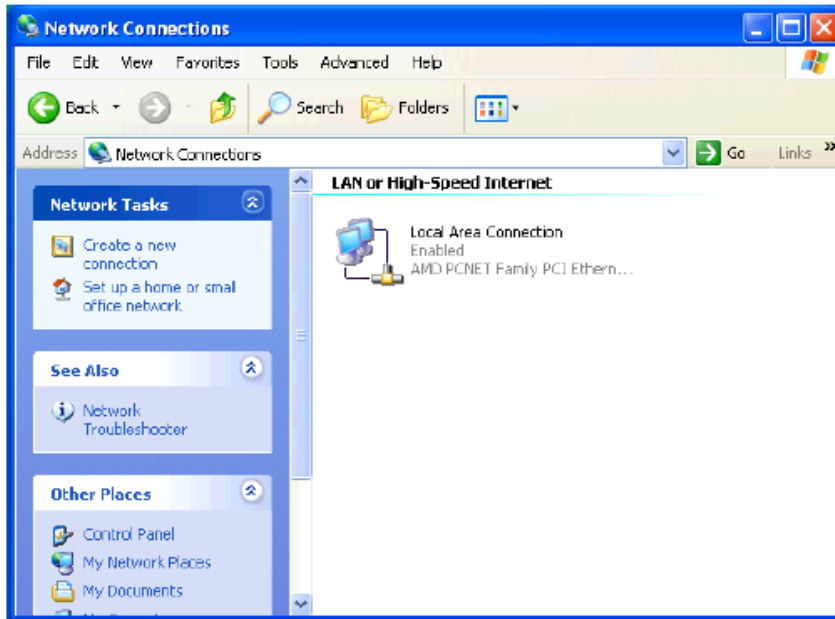
2.2. Network Setting of a PC

2.2.1. Verifying the network setup status of a user PC

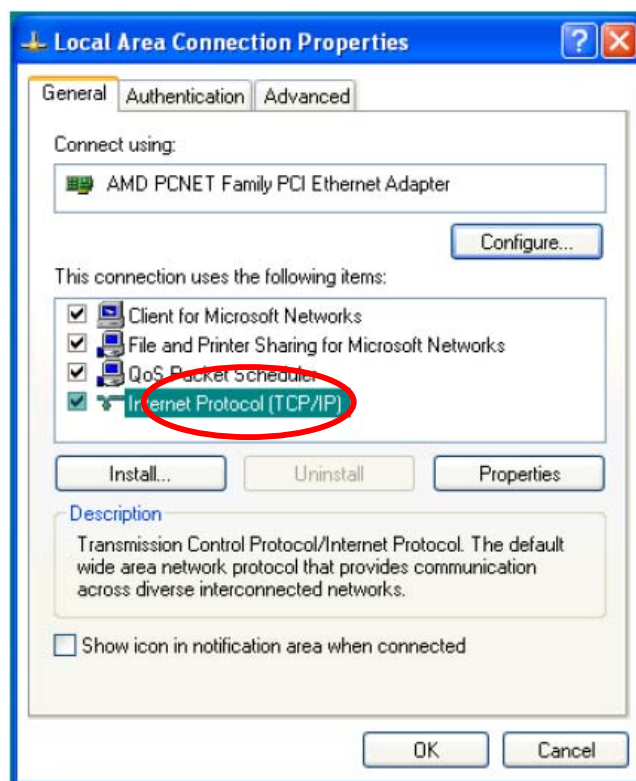
- To connect the SVP-1000 decoder to the user PC, the network setting of the user PC must be verified as in the following:



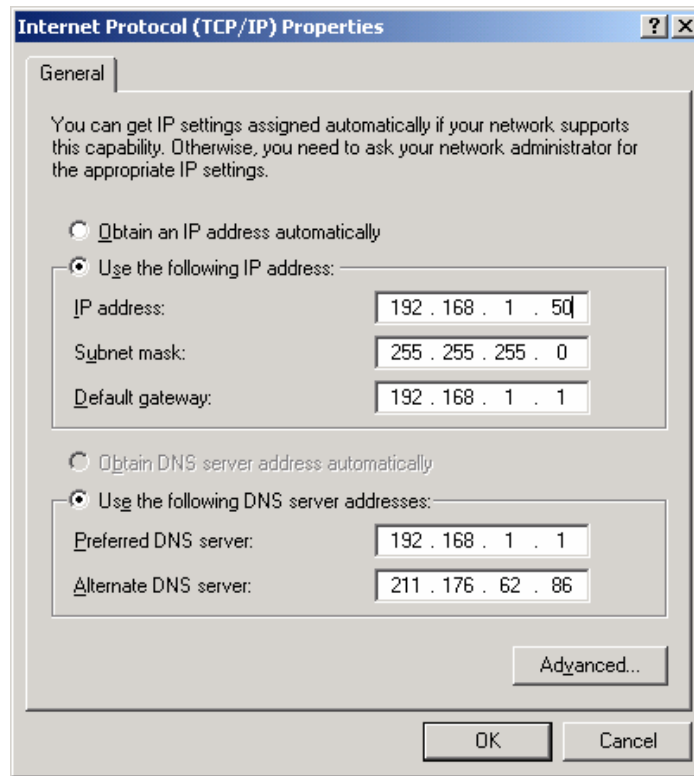
- 1) Go to 'Start' -> 'Settings' -> 'Control Panel', then select 'Network and Internet Connection'



2) Click Local Area Connection



3) Check the properties of Internet Protocol [TCP/IP]



Network Setting of User PC

- 4) Setup IP Address, Subnet Mask and Gateway in the user PC with 192.168.1.50, 255.255.255.0 and 192.168.1.1 as it is shown in the picture above.

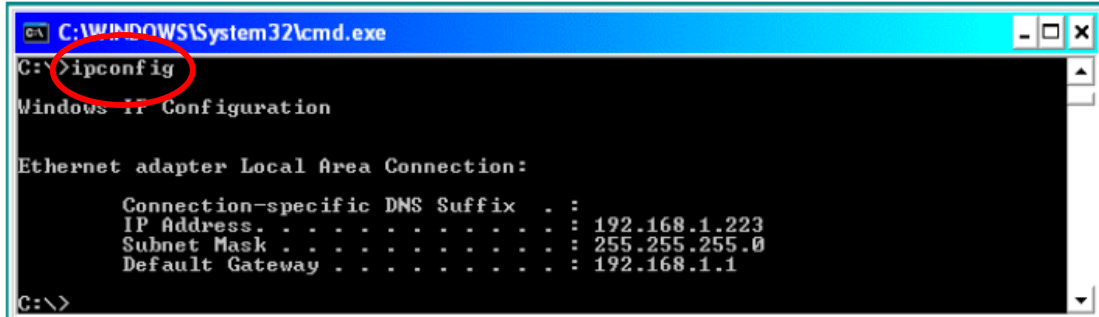
• Caution

- To activate SVP-1000, the user PC must have the same network setup status as it is preset in the SVP-1000 decoder. But when you assign the IP address, please be careful not to use the default IP written on the back side of the video server (192.168.1.10), since the same default IP address is allotted to all products.

- Basic network setting values of SVP-1000 are:

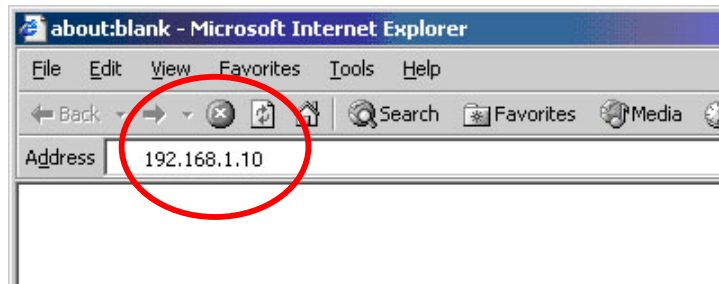
- ▶ **IP Address : 192.168.1.10**
- ▶ **Subnet Mask : 255.255.255.0**
- ▶ **Gateway : 192.168.1.1**

- After network setting of a PC, you can verify the network status as following:



- 1) Go to ' Start' -> 'Run' ->input 'cmd'
- 2) When a DOS window appears as above, input 'ipconfig'.
- 3) The display shows the current network setting of a PC.

2.2.2. Operation of the Web Viewer (URL 192.168.1.10)



Start a Web Browser

- 1) Start a Web Browser and input 192.168.1.10 in URL and click 'Enter'. Then, a user log-in page appears. In case, it does not open, reset the video server (click the 'Reset hole') to bring it to the default value, and reboot it.
- 2) When the ActiveX Code for "vg3xview_viewer" pops up, click 'yes', then a message window shows as below.



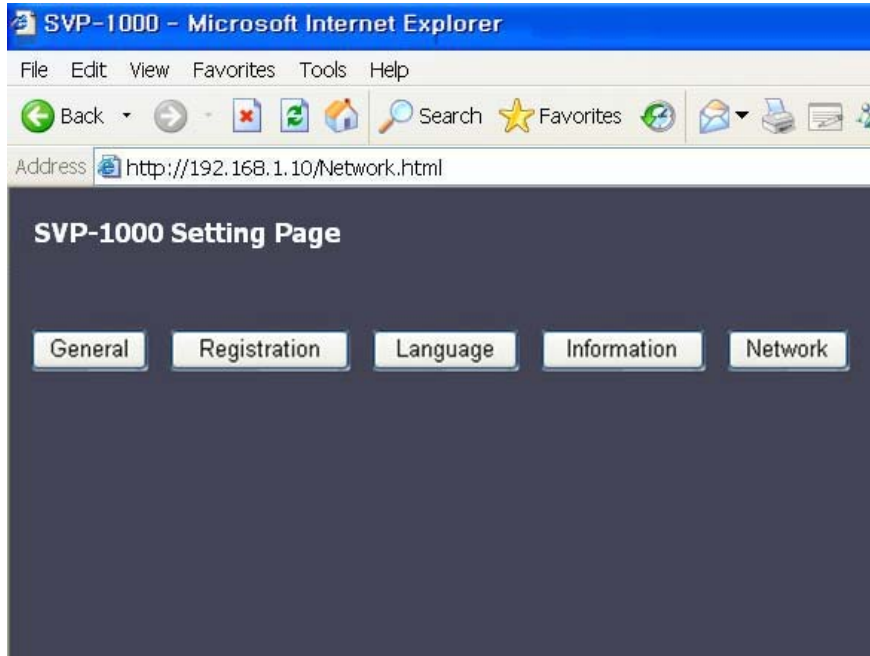
- 3) Click 'Install'.
- 4) When installation of 'vg3xview_viewer' is completed, the User Log-in (Auth) Page appears.



User Log-in (Auth) Page

- 5) When the Log-in Page appears, input User name and Password and click 'OK'.
 - User name: admin
 - Password: admin

Network Video Decoder SVP-1000 Full Manual



5) The Web Viewer appears .

3. Configuration of Network Environment

3.1. Check up Network Environment and Installation Type

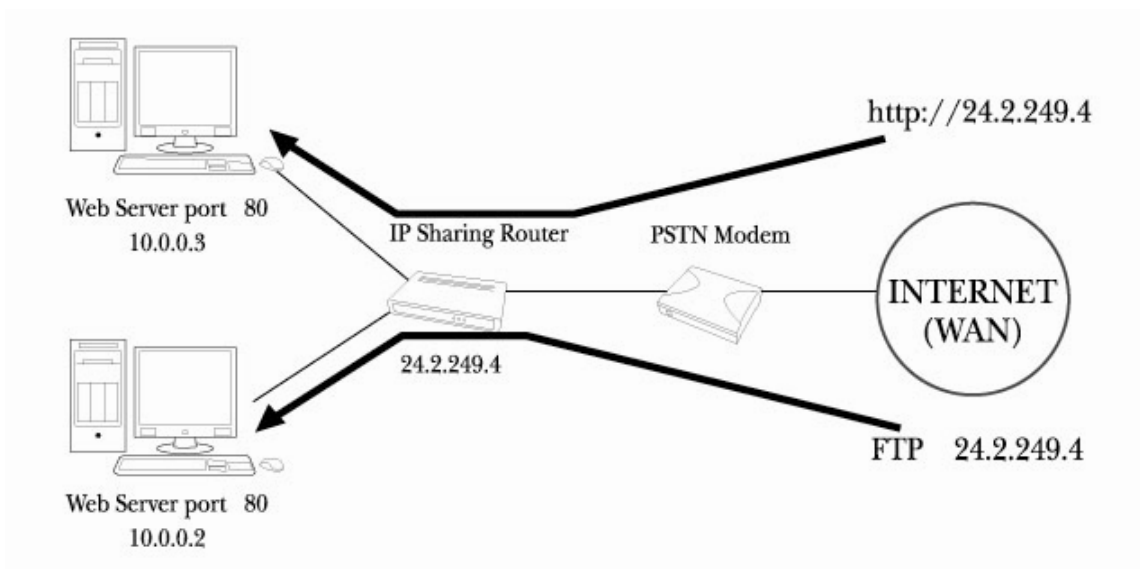
► To install SVP-1000 properly, basic understanding of Network Environment is required.

• Private line Environment

In a huge complex such as Company, University, Research center, public IP addresses are generally used. Under this environment, the user must set a Static IP Address for the SVP-1000 decoder. If DHCP server is available on the network, select 'Dynamic IP Address'. You can get the required information (IP address, subnet mask, gateway, DHCP server) from the network administrator.

• Broadband (ADSL, Cable, Fiber Optic) Modem Environment

At Home, in the stores and small offices a Broadband modem (DSL, Cable Modem) or a public IP address is usually in use. In order to use several PCs sharing one Public IP address, the user need a specific device called Router.



3.2. Installation

3.2.1. IP Address Setup

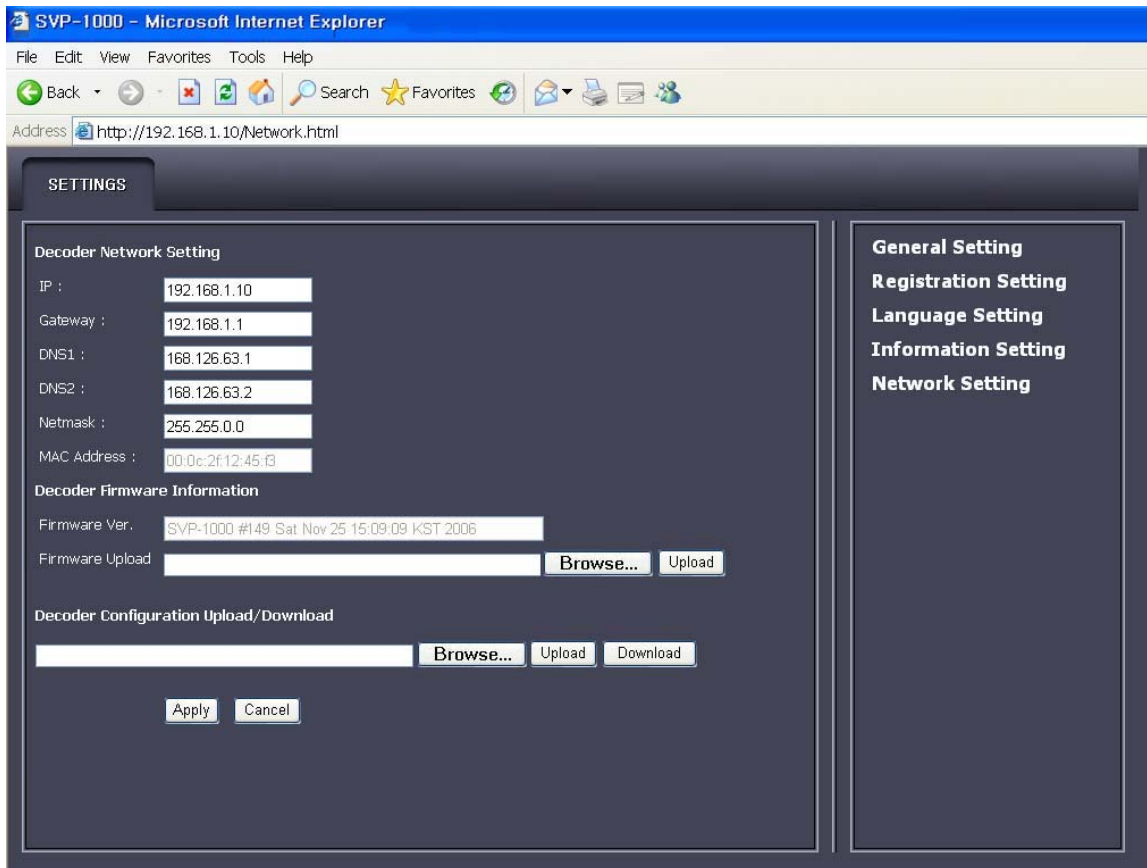
- 1) After checking Video, connect SVP-1000 to a PC with a Cross LAN Cable
- 2) Cable connection and Network Setup should be done as it is instructed in ' 2.1. Installation and 2.2 network setting '.
- 3) Run a Web Browser and input 192.168.1.10 in URL and click 'Enter'.
The Decoder Auth Page appears.



Auth Page of SVP-1000

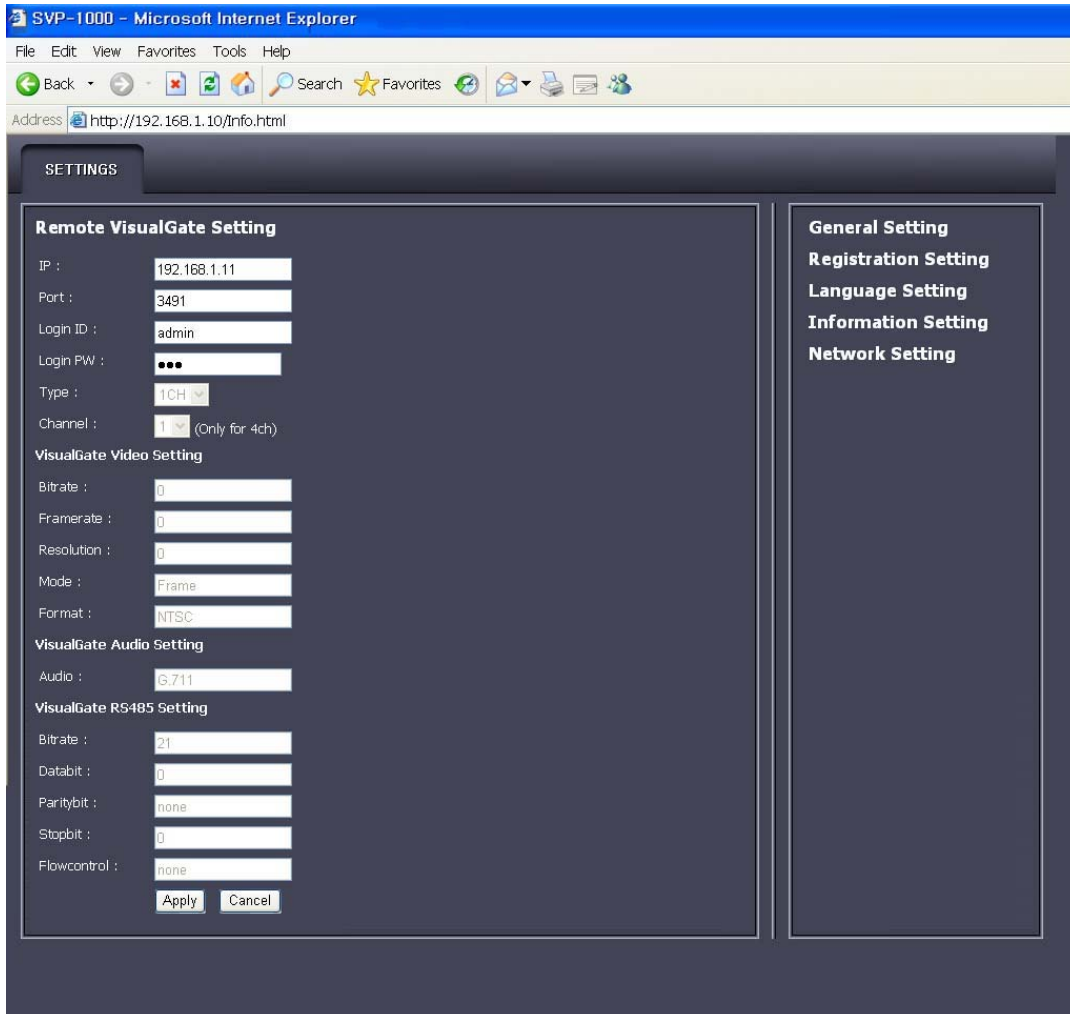
- 4) Put 'admin' in User Name and Password line, click 'OK',
- 5) Click 'Settings', then 'Setting Page' appears.
- 6) Go to 'Network Setting' on the right side of the screen.
- 7) Input default IP Address, Gateway, Netmask of SVP-1000 on the Network Setting Page.
- 8) 2 different DNS Addresses should be given.
- 9) Click 'Apply' to save setting values.

Network Video Decoder SVP-1000 Full Manual



- 10) And then click 'Information Setting' on the right side of the screen.
- 11) Input IP, Port, Log-in ID, Log-in PW of the Video Server.
- 12) Click 'Apply' to save setting values.

Network Video Decoder SVP-1000 Full Manual



13) After 'information Setting', remove the Cross LAN Cable connected between SVP-1000 and a PC.

14) Connect SVP-1000 to a local Area Network with a Straight LAN Cable.

15) Connect a PC to a Local Area Network with a Straight LAN Cable.

16) **VIDEO CHECK:**

Run a Web Browser on your PC, input default IP of SVP-1000 and click 'Enter',

- When Video of connected SVG-3010 is seen, SVP-1000 is correctly set up.

- When Video of connected SVG-3010 is not seen, check whether there might be IP confliction in Network, and - re-check the network set values of SVP-1000 and the video server and of the user PC.

4. Display Mode

4.1. Initial Login Screen

4.1.1. Installation of the Web Viewer

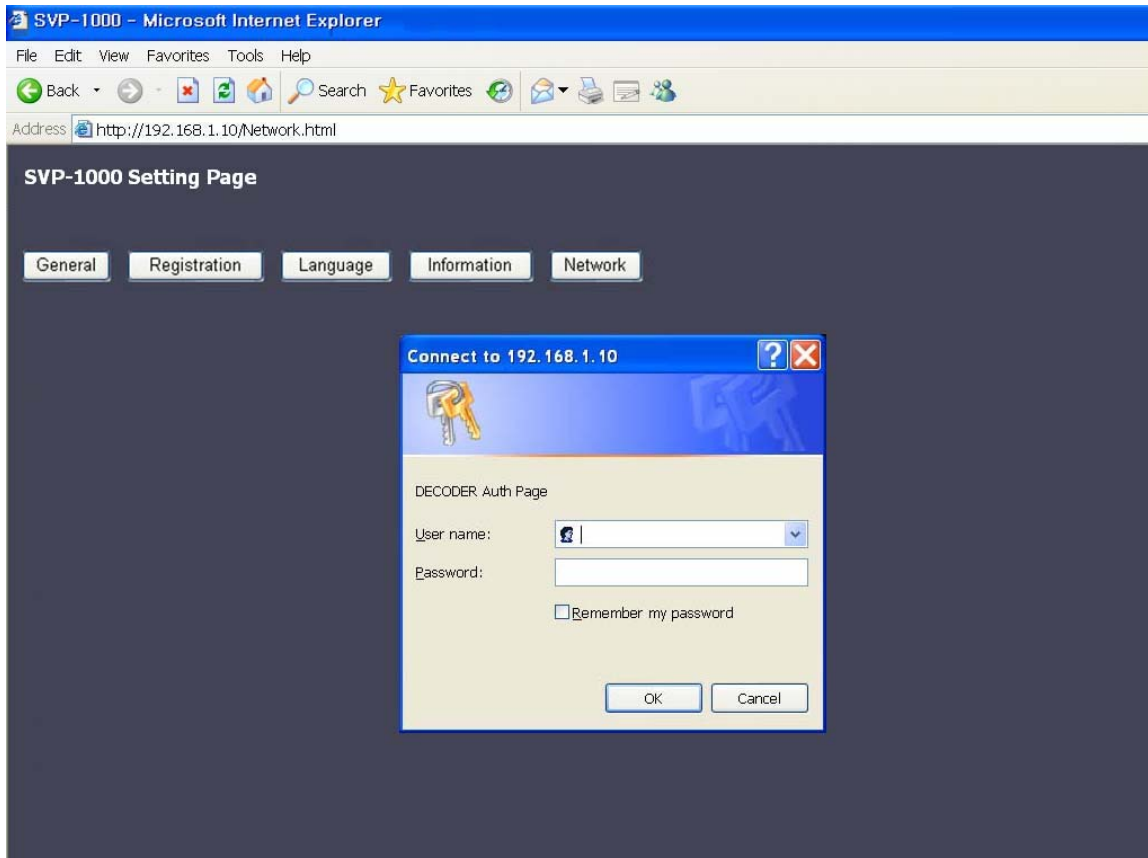
1. Internet Explorer browser starts.
2. When the ActiveX Code pops up, click 'yes', then a message window shows as below.



3. Click 'Install'
4. When installation of 'vg3xview_viewer' is completed, the initial Login Page (Auth Page) appears.



4.1.2. Initial Login Screen of SVP-1000



► Admin/User Login

When the Login Page appears, input User name and Password and click 'OK'.

Initial Login setting is:

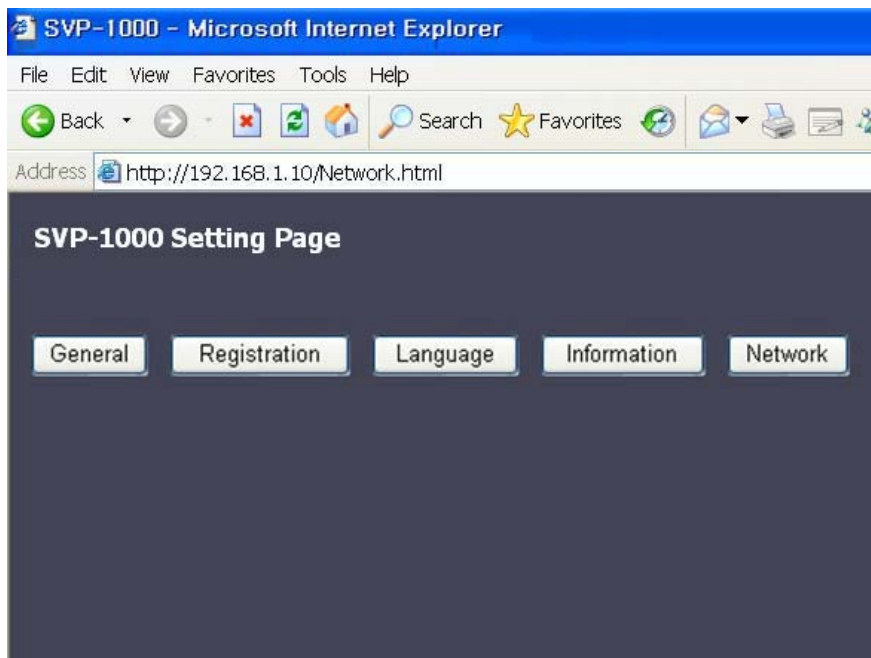
- User name: admin
- Password: admin

- **Caution:** Only the Administrator is authorized to reset the 'Setting Values'.

4.2. SVP-1000 Setting Page

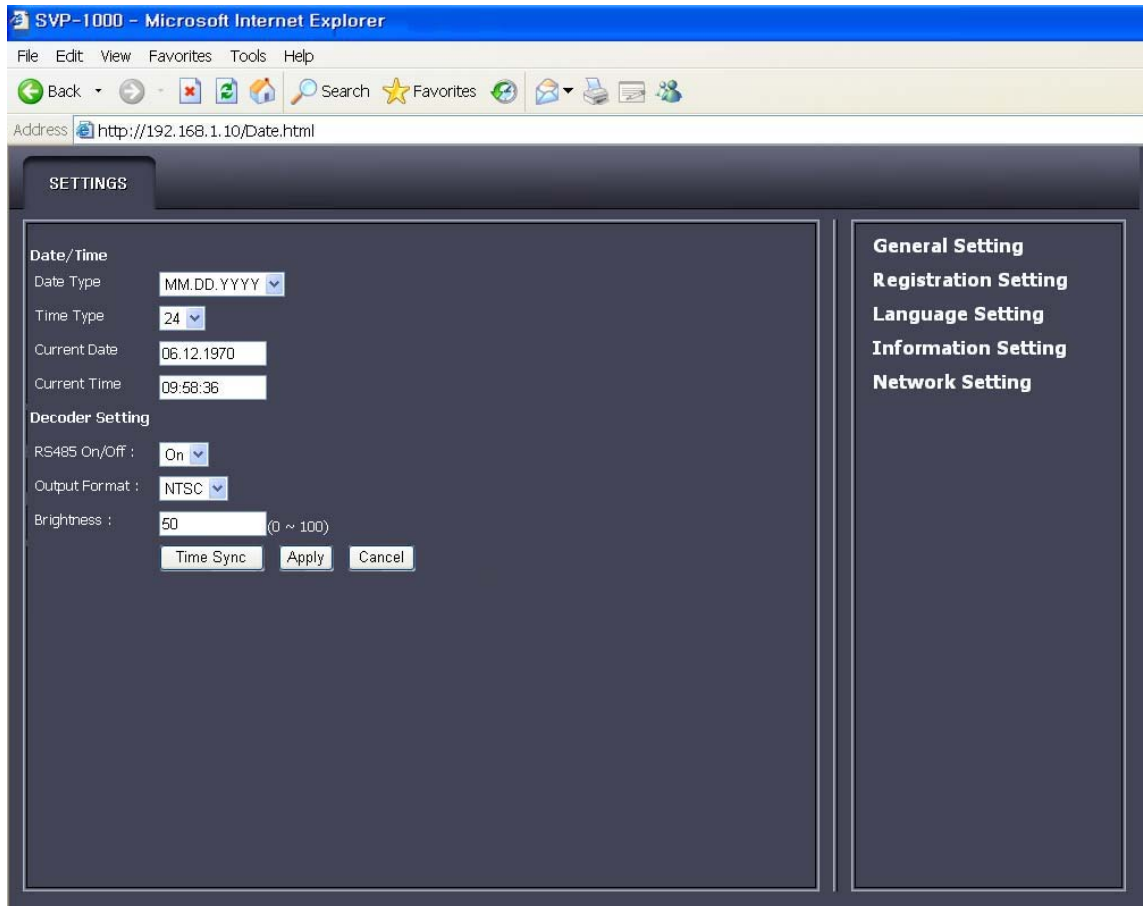
The User can change the setting values:

- ▶ To set up or modify the Decoder Setting → Go to 'General' and Click
- ▶ To set up or modify the Password → Go to 'Registration' and Click
- ▶ To set up or modify the operation Language → Go to 'Language' and Click
- ▶ To set up or modify the IP address/Port Number/User ID/User PW of the Video Server → Go to 'Information' and Click
- ▶ To set up or modify the Network Setting, and to update the firmware → Go to 'Network' and Click.



5. Admin Setting Mode

5.1. General Setting



General setting

- **Date/Time**

- ▶ **Date Type:** It shows the structure of date Indication.

- ▶ **Time Type:** It shows the type of time indication

- ▶ **Current Date:** It shows the date of operation

- ▶ **Current Time:** It shows the time of operation

- **Decoder Setting**

- ▶ **RS485 on/off:** The Use of RS485 is selective

- ▶ **Output format:** The video format can be setup when a camera is compatible with PAL and NTSC.

(Usually, the format is selected automatically: PAL/NTSC, according to the type of camera,)

► **Brightness:** It shows the Brightness of operation (0~100 value)

5.2. Registration Setting

The screenshot shows the 'Registration Setting' page in a Microsoft Internet Explorer browser. The browser window title is 'SVP-1000 - Microsoft Internet Explorer' and the address bar shows 'http://192.168.1.10/Reg.html'. The page has a dark blue header with 'SETTINGS' and a sidebar on the right with menu items: 'General Setting', 'Registration Setting', 'Language Setting', 'Information Setting', and 'Network Setting'. The main content area is titled 'Registration' and contains a form with the following fields: 'User ID' (a dropdown menu showing 'admin'), 'New Password' (a text input field), and 'Confirm' (a text input field). Below the input fields are 'Apply' and 'Cancel' buttons.

Registration Setting

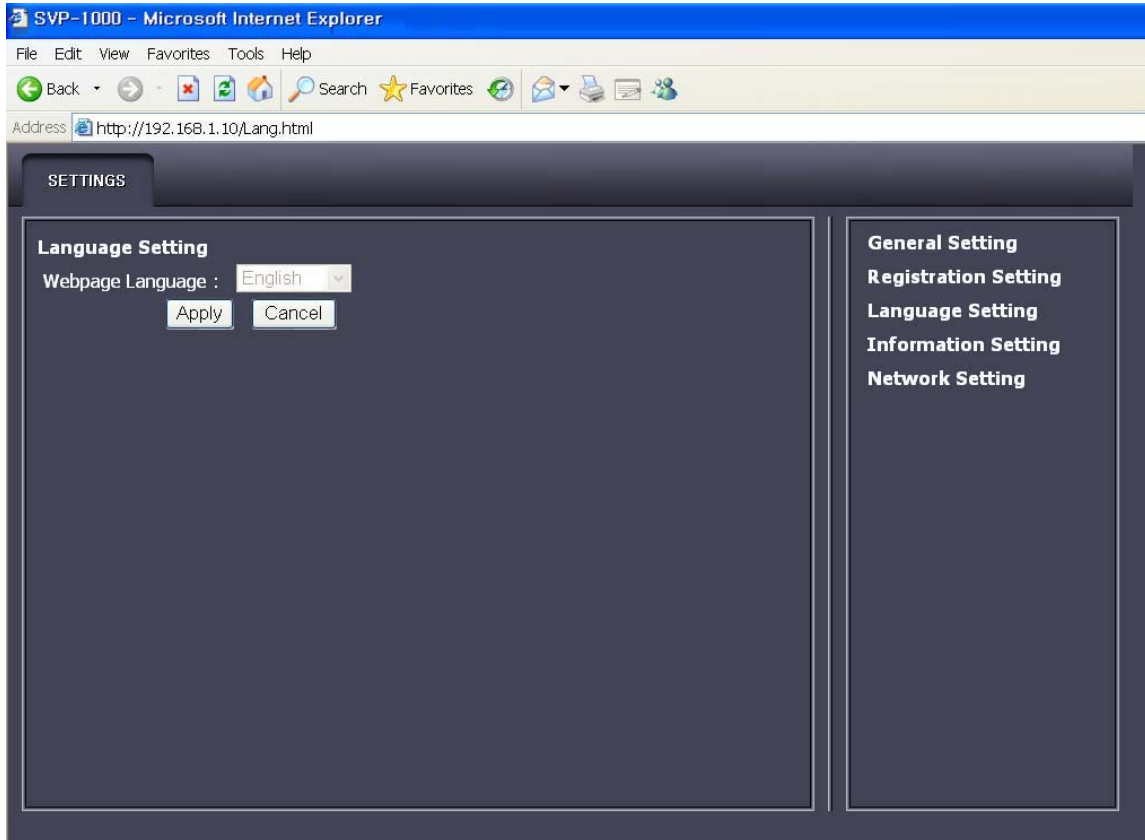
• Registration

User ID: Input a user ID

New Password: Type a new Password

Confirm: To confirm, please type the New Password again.

5.3. Language Setting



Language Setting

- **Language setting**

Webpage Language: User can select the language of operation.

5.4. Information Setting

Remote VisualGate Setting

IP : 192.168.1.11
Port : 3491
Login ID : admin
Login PW : ●●●
Type : 1CH
Channel : 1 (Only for 4ch)

VisualGate Video Setting

Bitrate : 0
Framerate : 0
Resolution : 0
Mode : Frame
Format : NTSC

VisualGate Audio Setting

Audio : G.711

VisualGate RS485 Setting

Bitrate : 21
Databit : 0
Paritybit : none
Stopbit : 0
Flowcontrol : none

Apply Cancel

General Setting
Registration Setting
Language Setting
Information Setting
Network Setting

Remote VisualGate Setting

- **Remote VisualGate Setting** : Following information should be correctly given.

- ▶ **IP**: Input the IP address of the Video Server
- ▶ **Port**: Input Port numbers of the Video Server
- ▶ **Login ID**: Input the Login ID of the Video Server
- ▶ **Login PW**: Input the Login Password of the Video Server
- ▶ **Type** : Select the type of Video Server

▶ **Channel:** When using the 4channel Video Server, the user can choose the desired channel
(cf.> The current feature of SVP-1000 does not support 4ch Video Server.)

• **VisualGate Video Setting**

▶ **Bitrate:** It shows Bitrates of the VisualGate Product which is in connection

▶ **Framerate:** It shows Framerate of the VisualGate product which is in connection

▶ **Resolution:** It shows Resolution of the VisualGate product which is in connection

▶ **Mode:** The live video can be set alternatively in the Frame or GOP mode.

▶ **Format:** The video format can be setup when a camera is compatible with PAL and NTSC.
(Usually, the format is selected automatically: PAL/NTSC, according to the type of camera,)

• **VisualGate Audio Setting**

▶ **Audio:** It shows the status of audio of the VisualGate product which is in connection

VisualGate RS-485 Setting

▶ **Bitrate:** It shows Bitrates of the RS-485 which is in connection

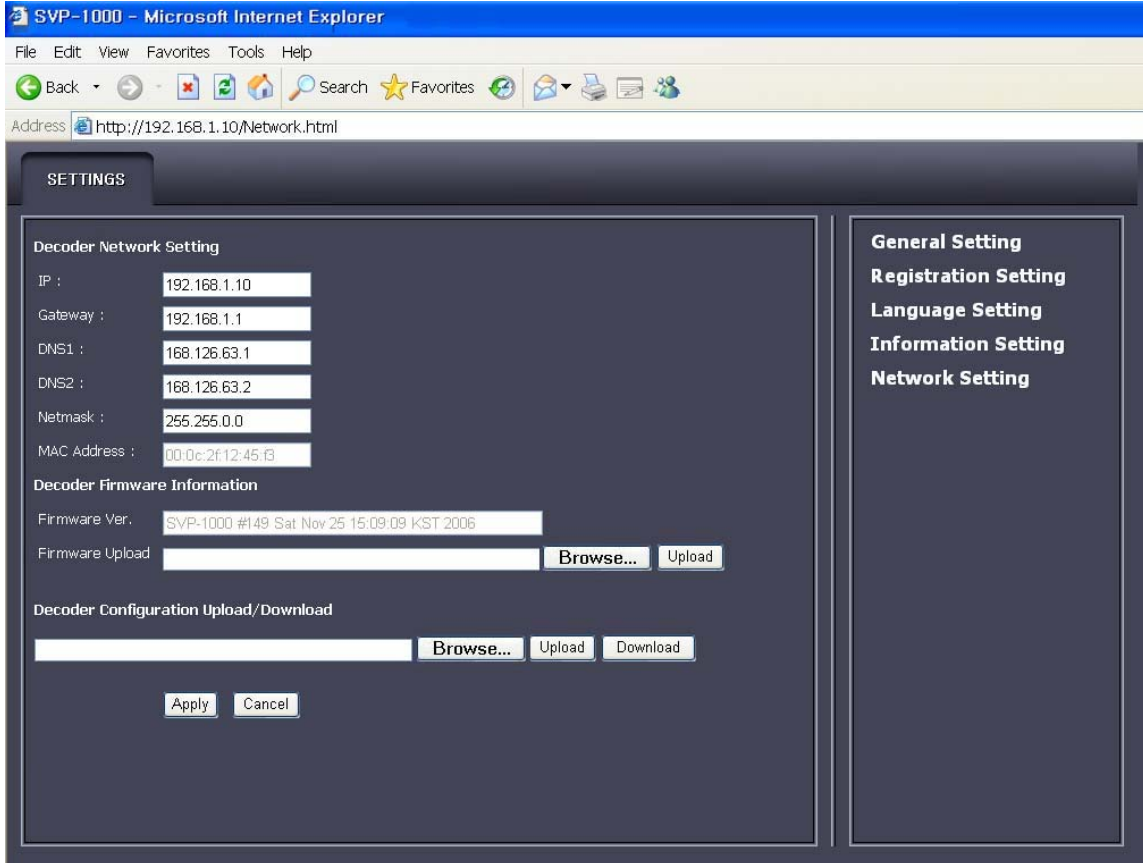
▶ **Databit:** It shows Databit of the RS-485 which is in connection

▶ **Partiybit:** It shows Partiybit of the RS-485 which is in connection

▶ **Stopbit:** It shows Stopbit of the RS-485 which is in connection

▶ **Flowcontrol:** It shows Flowcontrol of the RS-485 which is in connection

5.5. Network Setting



Network Setting

- **Decoder Network Setting** : Following information should be correctly given.
 - ▶ **IP**
 - ▶ **Gateway**
 - ▶ **DNS1**
 - ▶ **DNS2**
 - ▶ **Netmask**
 - ▶ **MAC Address**
- **Decoder Firmware Information** : It shows Firmware Version.
- **Decoder Configuration Upload / Download** :

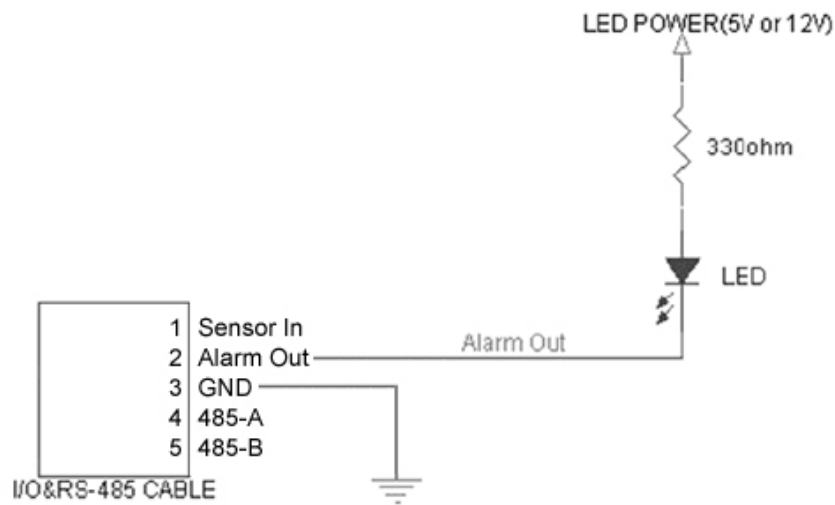
Network Video Decoder SVP-1000 Full Manual

- 1) Download the newest Software from the web site which provides the firmware update file and save it in a PC.
 - 2) Click 'Browse' and select the update firmware file in the search window.
 - 3) Click 'upload' and wait until the window shows a message of completion, and then reboot the decoder.
-
- Caution: While update is in the process, do not close or re-open the window. Also power disconnection can cause fatal damage.

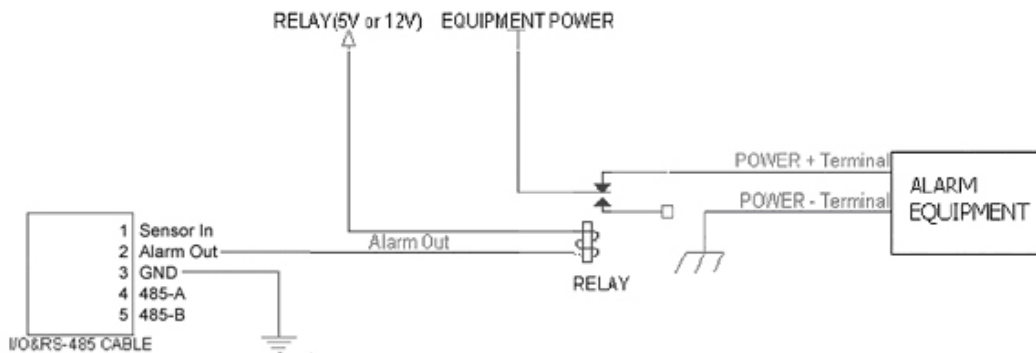
APPENDIX A.

DECODER CONNECTION DIAGRAMS

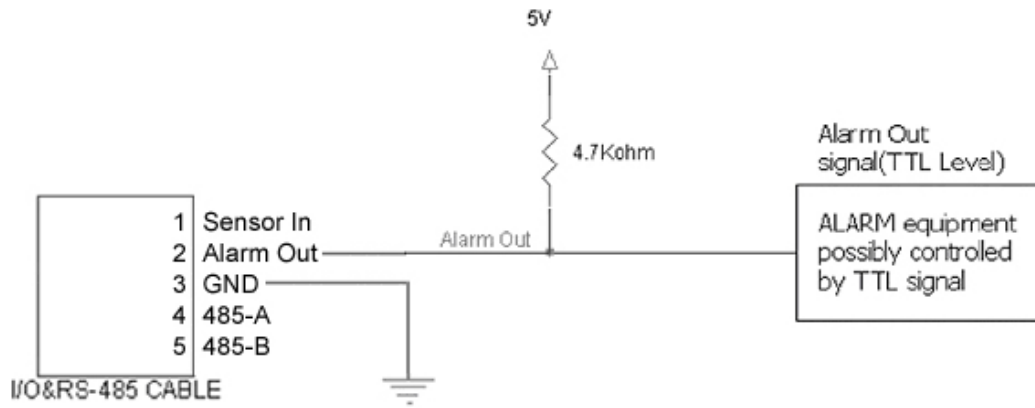
- Connection with an LED as visual Indicator



- Relay Connection



• Other Connection



APPENDIX B.

TROUBLESHOOTING

Q. Video not displaying

A. No electrical power: Check electrical connections

A. Incorrect Video Server(SVG-3110) IP address and Decoder IP address:

Check and correct the IP address of the Video Server in information setting
(5. Admin Setting Mode > 5.4. Information Setting)

A. User not authenticated: Check user ID and password

A. Not connecting to network: Check PC's network setting

A. IP Camera inoperative:

Connect the video server(SVG-3110) to the IP Camera using a Cross LAN Cable
If video displays, it means that the IP Camera works properly.

Q. PTZ not working

A. Electrical power

Check electrical connections

A. Unauthorized User

Check if the User is authorized to use PTZ

A. Zoom not working

Check if the camera has a zoom lens

Q. Cannot delete ST4 file

A. Cannot delete recorded file (ST4)

Files cannot be deleted while playing

Stop playing and delete

APPENDIX C.

Technical Specification of SVP-1000

Video	Decompression Standard: MPEG-4 Bit Rate: Max. 2Mbps Frame Rate: Max. 25/30 fps Output: Analog Composite, 1Vp-p, 75 Ohms, PAL or NTSC
Audio	Decompression Standard: G.711, G.726 Bit Rate: 64Kbps, 32Kbps Sampling Frequency: 8 KHz Input: Microphone Input, -65 dB@600 Ohms Output: Line Output, -10 dB@600 Ohms
Network	Protocols : TCP, IP, UDP, HTTP Configuration : WEB Browser Ethernet : 10/100Base-T, Auto Sensing
Connector	Video Output : 1 x BNC Connector for Composite Audio Input : 1 x 3.5mm Phone Jack Audio Output : 1 x 3.5mm Phone Jack COM : 2 x Terminal Block for RS-485 and RS-232 Ethernet : RJ-45 Connector
Power	Input Voltage : DC 12V/1A Power Consumption : 4 Watts
Environment	Operating Temperature : 0 – 50°C (32 - 122°F) Humidity : 20 – 80% non-condensing
Dimension Weight	Dimension: 112(W)mmX30(H)mmX113(D)mm Weight: 330g

* The **DC Power Adaptor** is optional (not included in this packet)



Seorim Technology Co., Ltd
 #1001, daerung technotown vi, 493-6, gasan-dong, kumchun, seoul, korea, 153-803
 Tel: +82-2-2108-5860
 Fax: +82-2-2108-5869
 E-mail: sales@seorimtech.com
<http://www.seorimtech.com>